

» **SIPLA** **AUTOMATION**  
Leading forward

# X-ISOBORDER SYSTEM

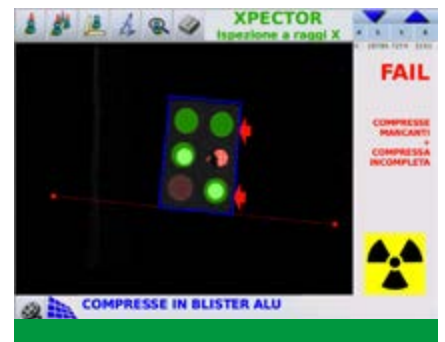
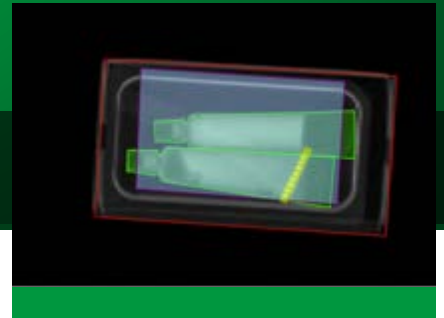
For packaging inspection



UP TO  
120 pcs/m

The X-ISOBORDER system is based on x-ray technology to inspect productions in the invisible spectrum range and through density verification. Inspection is possible for plastic, carton, and aluminium packaging.

The system is composed by low energy emission tube ( $< 30\text{kV}$ ) placed over the conveyor while the linescansensor is placed just under the plane of motion. Because of the low energy radiation used no specific precaution is demanded for usage as for law required certification.



# DETECTION AND PERFORMANCE

## DETECTABLE DEFECTS

### Metal particles presence.

The presence of metal is detected through complete opacity of even very small particles to x-radiation.

### Contaminants presence.

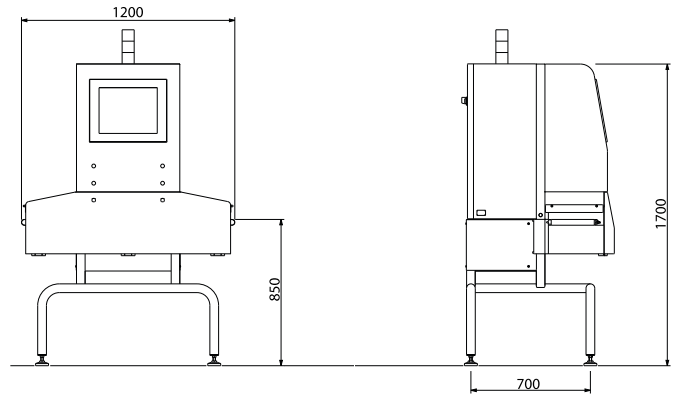
The presence of contaminants is detected through local density change.

### Correct product displacement.

The correct displacement of product can be memorized and stored through a statistical inspection process on user defined areas of interest.

### Presence of product in packaging closures and/or sealing.

The presence of product in sealing or near the sealing signals the failure of closures.



## PERFORMANCES

- ▶ Width of view: **260 mm.**
- ▶ Conveyor speed: **up to 80 m/min.**
- ▶ Production output: **up to 120 pcs/min.**
- ▶ Average resolution: **0.3 mm.**
- ▶ Smallest detectable metal particle: **<0.5 mm**

- ▶ Min. detectable contaminant (with density > 80% of that of the inspected product): **1mm**
- ▶ Correct product displacement: at operator discretion through progressive alarm thresholds.

The inspection threshold can be set in absolute or relative value with respect to the extrapolated variance calculated on memorization sessions. This is to adapt the system to natural production variability.

- ▶ Intuitive and user friendly handling

- ▶ Optional remote control access
- ▶ Statistical registration of production data
- ▶ Integration in existing transport systems
- ▶ High reliability, minimal maintenance

**SIPLAUTOMATION**  
Leading forward

Sipla srl  
Via Guido Rossa, 40-54  
40053 Valsamoggia (Bologna)  
Località Crespellano - Italy  
VAT: RI/BO 01733741209

[www.siplautomation.com](http://www.siplautomation.com)