

# FLEX AS DROPPER



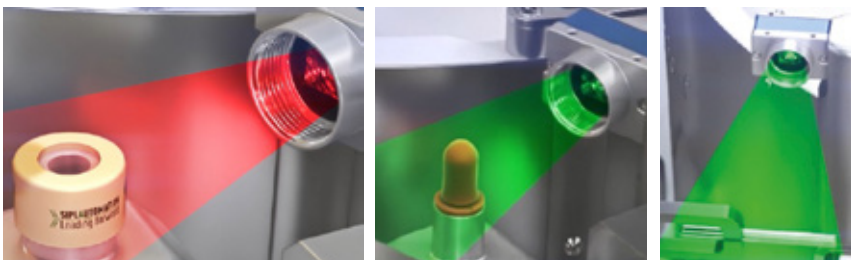
## EASY CHANGEOVER

Possibility to produce different size and models of dropper with an unique equipment, managing the changeover through the HMI.



## QUALITY INSPECTION

Through dedicated vision systems, it can be possible to check the entire quality of each component before the assembly. Only parts in compliance with customer's quality standard will be feeded and assembled.

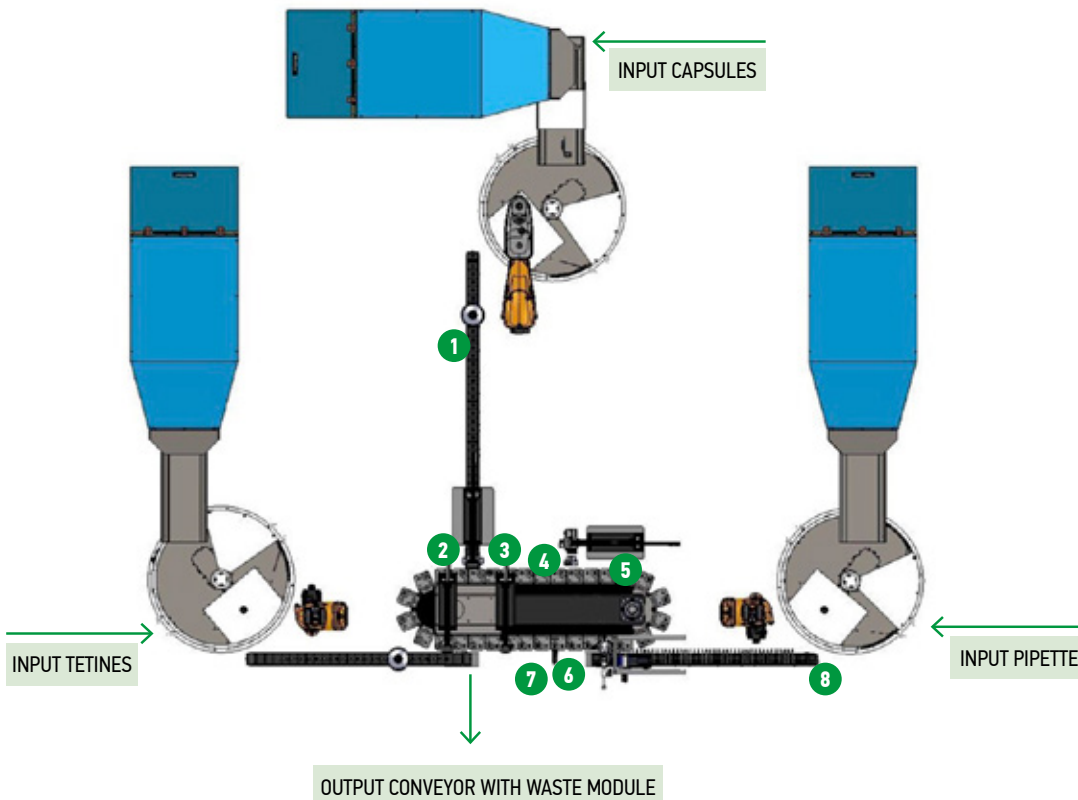
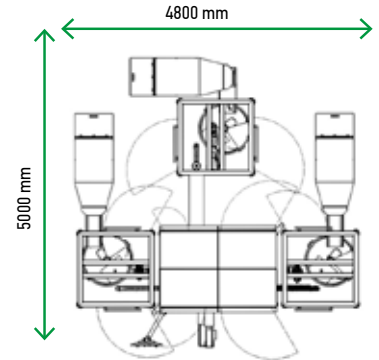


# FEATURES AND SIZES

## INTELLIGENT AND ROBOTIC FEEDING SYSTEM



The three parts (pump, plug, canula) will be fed, in single or double picking, by intelligent and robotized system, in accordance with the production output requested.



- 1 Conveyor with vision system and waste module.
- 2 Pick and place for assembling Capsules on Tetines (2°station)
- 3 Cylinder press assembling (3°station)
- 4 Rotation of the assembly (4° station)
- 5 Cylinder press for checking the properly position of the assembly (5°station)
- 6 Pick and Place for assembling Pipette on the assembly (6° station)
- 7 Vision system for upper profile (7° station)
- 8 Conveyor with vision system and waste module